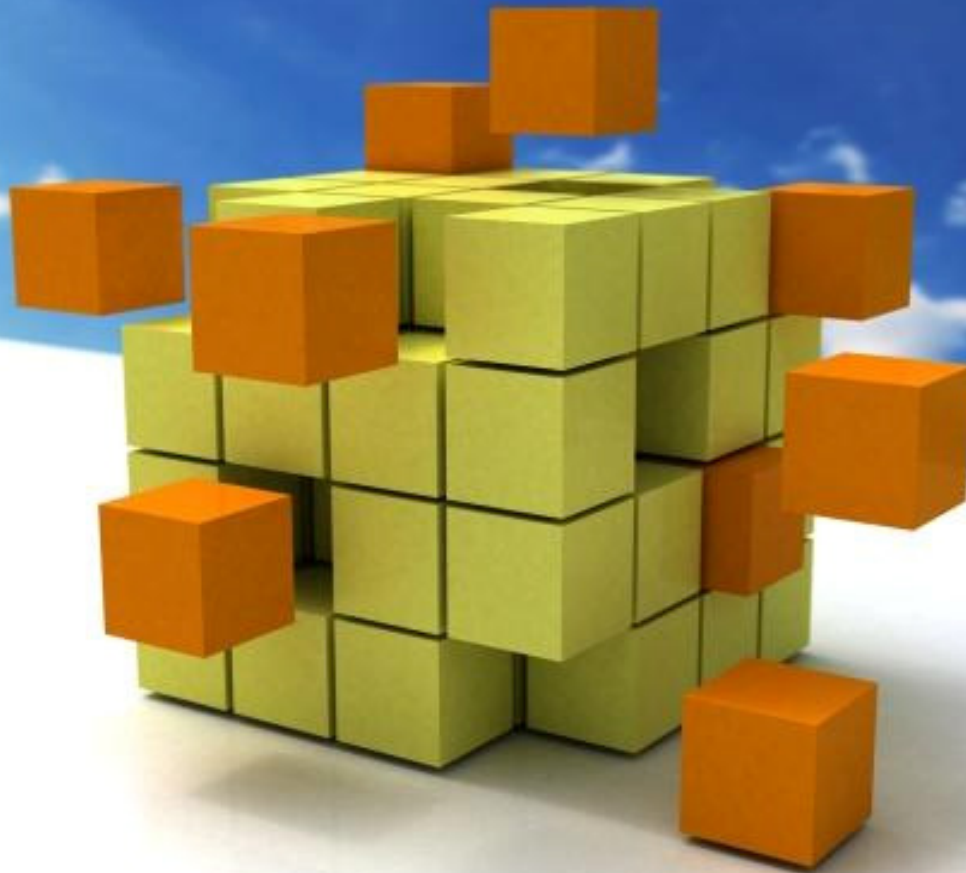


# State of play on NSDI in Ukraine

E&I workshoop 29. of January 2014

Tomaž Petek



# Aim of presentations

- Background, objectives and Outputs of the Report
- COMPONENT 1: NSDI COORDINATION AND ORGANIZATIONAL ISSUES
- COMPONENT 2: LEGAL FRAMEWORK AND FUNDING
- COMPONENT 3: REFERENCE DATA AND CORE THEMATICS DATA SETS
- COMPONENT 4: METADATA DESCRIPTION
- COMPONENT 5: WEB SERVICES FOR SPATIAL DATA (access, view and download)
- COMPONENT 6: USE CASES AND EFFICIENCY OF THE NSDI
- COMPONENT 7: STANDARDS



## COMPONENT 1: NSDI COORDINATION AND ORGANIZATIONAL ISSUES

- **LEVEL OF SDI** – at the moment there is no initiative with a name, structure or organisation responsible and or legislation/strategy at the national level or but there are several efforts to bring together stakeholders, but it has not (yet) been formalised (State agency for land Resources, and within it State enterprise for land cadastre)
- **DEGREE OF OPERATIONALITY** – several components of the SDI have reached some level of operationally in Ukraine. (metadata, data, services, data policy, legal framework, organisational structure)



## COMPONENT 1: NSDI COORDINATION AND ORGANIZATIONAL ISSUES

- **COORDINATION** - de facto coordinating body of the SDI is a biggest national data provider SALR and within SELC - data users or 'national GI-association' at the moment are not directly involved in the coordination of the SDI. This topic was mentioned also in governmental program for development of cartographic activities 2003 – 2010.
- **PARTICIPANTS** – main producers and users of spatial data in Ukraine. Mainly public sector actors participating in the SDI and partly academia?



## COMPONENT 2: LEGAL FRAMEWORK AND FUNDING

- LEGAL FRAMEWORK
  - several draft laws until now (2007, 2011),
  - at the moment Law on state cadastre give partly legal framework for NSDI, state land cadastre as super integrator
  - organisational changes and pilot project will be base for legal act,
- OPEN GOVERNMENT and PRIVATE PUBLIC PARTNERSHIP - the Law «On Basic Provisions for Public- Private Partnership Development in Ukraine»
- POLICY AND LEGISLATION ON ACCESS TO PUBLIC SECTOR INFORMATION (PSI) - The law of Ukraine on Access to Public Information
- LEGAL PROTECTION OF GI BY INTELLECTUAL PROPERTY RIGHTS -
- RESTRICTED ACCESS TO GI FURTHER TO THE LEGAL PROTECTION OF PRIVACY
- DATA LICENCING and FUNDING MODEL FOR SDI AND PRICING POLICY - data bases established and kept by the central and local executive agencies, free of charge





## COMPONENT 3: REFERENCE DATA AND CORE THEMATIC DATA SETS

- SCALE AND RESOLUTION (LEVEL OF DETAILS)
- GEODETIC REFERENCE SYSTEM AND PROJECTIONS
- QUALITY OF REFERENCE DATA & CORE THEMATIC DATA
- INTEROPERABILITY
- LANGUAGE AND CULTURE
- SCALE AND RESOLUTION (LEVEL OF DETAILS)
- GEODETIC REFERENCE SYSTEM AND PROJECTIONS
- QUALITY OF REFERENCE DATA & CORE THEMATIC DATA
- INTEROPERABILITY
- LANGUAGE AND CULTURE



## COMPONENT 4: METADATA DESCRIPTION

- AVAILABILITY METADATA
- METADATA CATALOGUE AVAILABILITY AND STANDARDS
- METADATA IMPLEMENTATION - a coordinating authority for metadata implementation at the level of the SDI?



## COMPONENT 5: WEB SERVICES FOR SPATIAL DATA

- **DISCOVERY SERVICES** - one or more discovery services making it possible to search for data exist but they are not based for search through metadata
- **VIEW SERVICES** - several view services available for to visualise data from the themes (also from some INSPIRE annexes)
- **DOWNLOAD SERVICES** - there are some on-line download services but for registered users only
- **TRANSFORMATION SERVICES** – at the moment there are no transformation services enabling spatial datasets to be transformed to achieve interoperability
- **INVOKING SERVICES** – not available at the moment





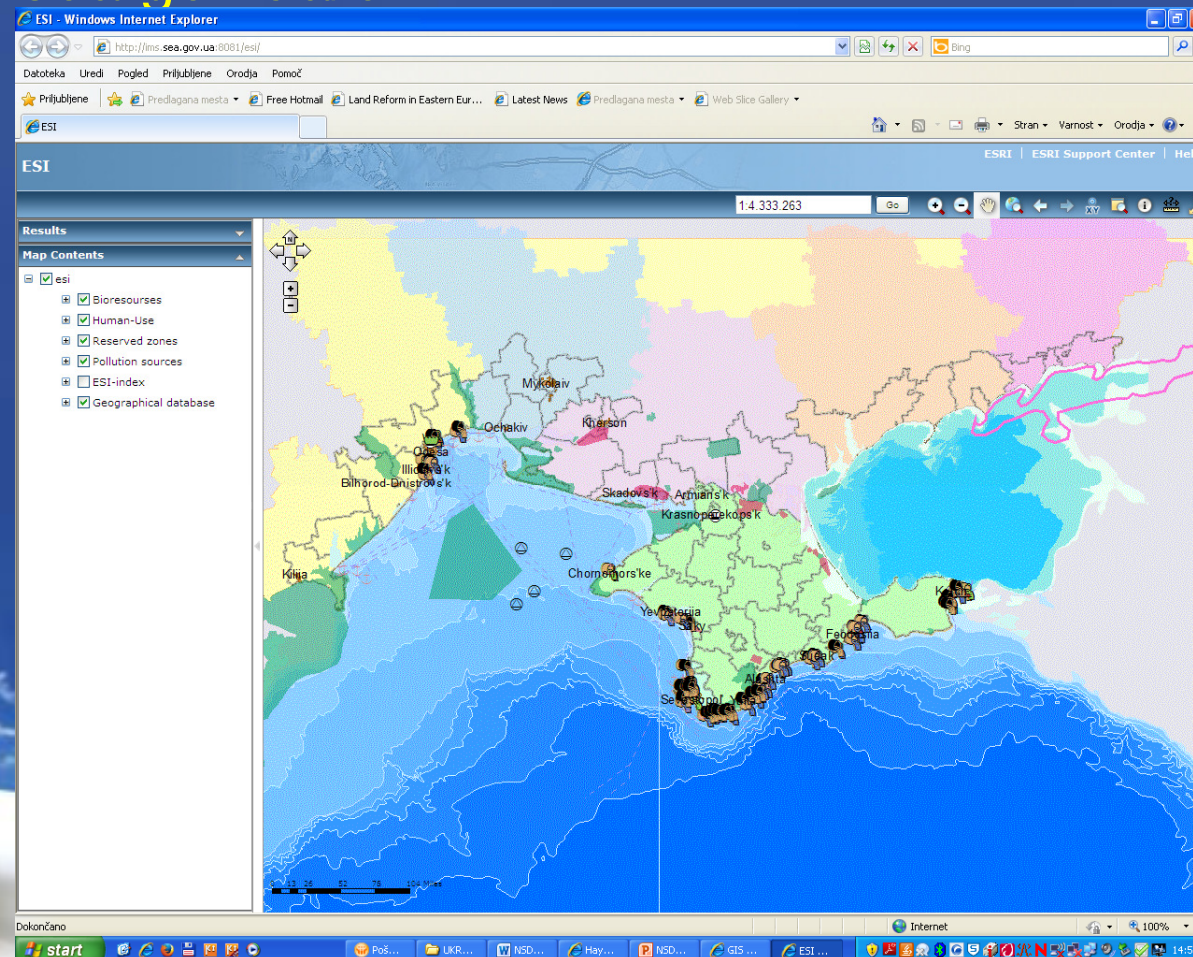
# Geoportal of an administrative-territorial structure of Ukraine

- Research geodetic institute of Ukraine within ALRU
- <http://atu.gki.com.ua/en/map>

The screenshot shows a web browser window displaying the Geoportal of administrative-territorial structure of Ukraine. The page title is "State Agency of Land Resource of Ukraine" and "Geoportal of administrative-territorial structure of Ukraine". The website is hosted by the Research Institute of Geodesy and Cartography. The main navigation menu includes "Main", "About", "Map", "Administrative division", and "Help". The "Map" tab is active, showing a map of Ukraine with its administrative divisions (oblasts) highlighted in various colors. A list of oblasts is visible on the left side of the map, including Vinnytska, Volynska, Dnipropetrovska, Donetsk, Zhytomyrska, Zakarpatska, Zaporizka, Ivano-Frankivska, Kyivska, Kirovohradska, Luhanska, Lvivska, Ternopilska, Khmelnytska, Vinnytska, Kirovohradska, Dnipropetrovska, Zakarpatska, Chernivetska, Mykolajivska, Odeska, Mykolajivska, Zaporizka, Khersonska, and Rivnenska. The map also shows neighboring countries: Romania, Moldova, and Russia. The website is displayed in English, and the browser window shows the URL <http://atu.gki.com.ua/en/map>.

# Ukrainian Scientific Centre of Ecology of the Sea

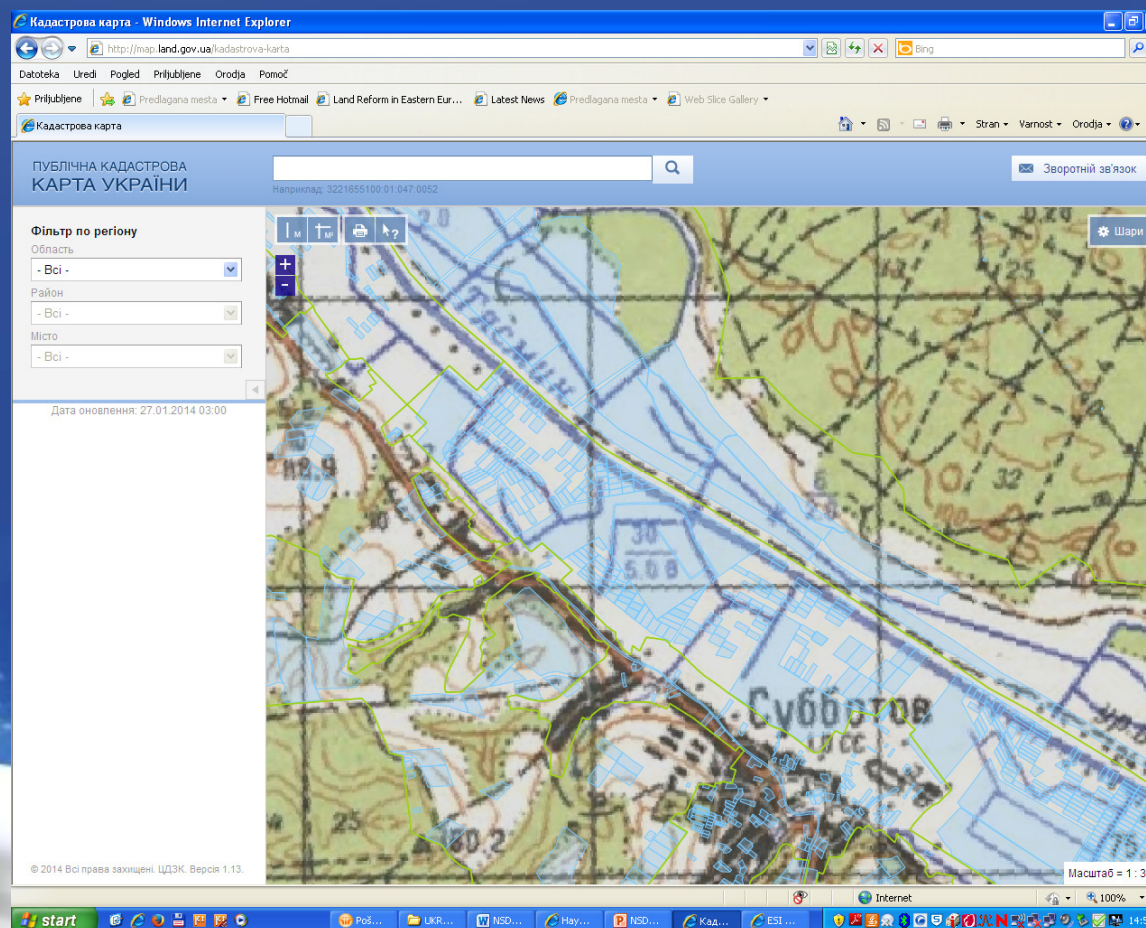
- set of very interesting map services for Ukrainian waters
- <http://site.sea.gov.ua/en>



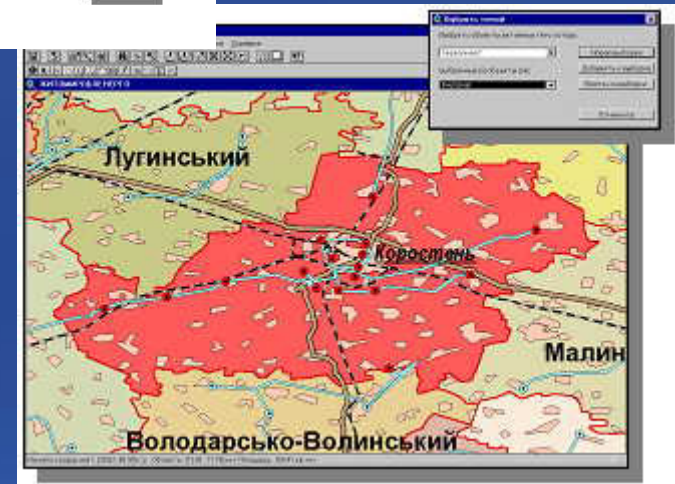
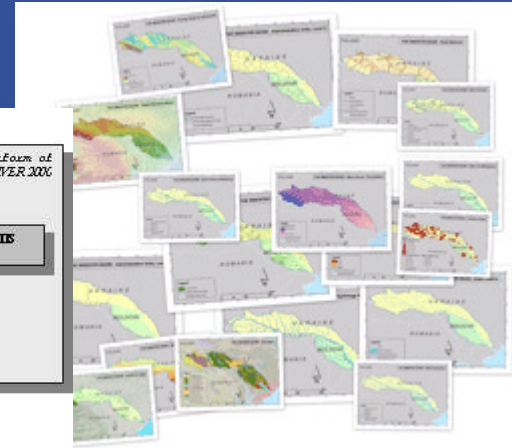
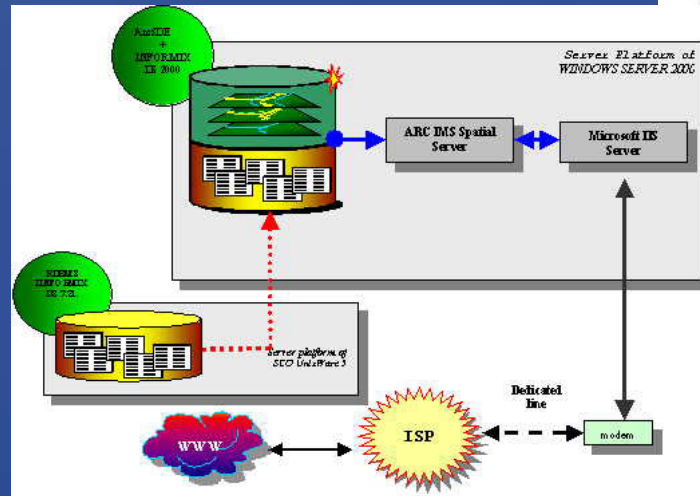
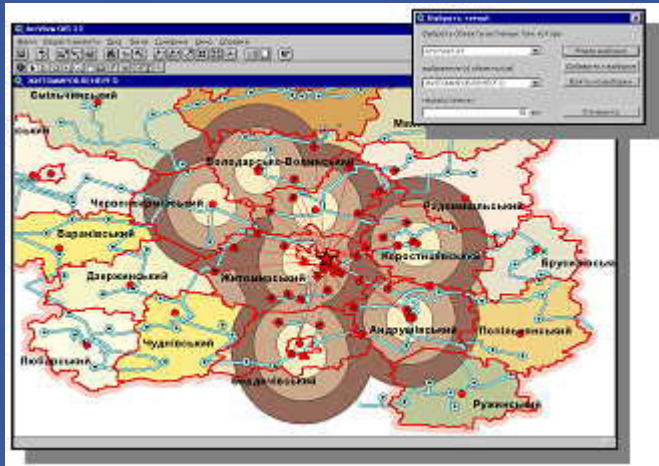


# Public geo portal of national cadastre system

- Access to cadastral maps
- <http://map.land.gov.ua/kadastrova-karta>



# COMPONENT 6: USE CASES AND EFFICIENCY OF THE NSDI



## COMPONENT 7: STANDARDS

- a national standard for the Ukraine Geographic Information Reference Model which harmonises with the appropriate ISO 191xx standards. The sectorial standards of geographic information were also developed and approved according to ISO 19100
- State service of Ukraine for Technical Regulation and consumer's policy (DTR) is a National Institute for Standardization





# CONCLUSIONS

- LEGAL BACKGROUND (Draft law within new EC Twinning project, D, LI, NL)
- ORGANISATION (SALR and SLCC and PPP)
- INTEROPERABILITY OF SPATIAL DATA
- (Electronic cadastre as unique fundamental information system for all stakeholders as state geo platform)
- NETWORK SERVICES (in development)
- FUTURE Development program and land liberalisation and privatisation)
- NEED OF CAPACITY BUILDING (oblasti and municipality)



*THANK YOU !*

Tomaž Petek  
e-mail: [tomaz.petek@gov.si](mailto:tomaz.petek@gov.si)  
[www.geoportal.gov.si](http://www.geoportal.gov.si)

